



## Shanghai Linreix Electronics Ltd.

No. 2-601, Lane 369, Feihong Road, Shanghai 200086, China  
Tel: +86.21.65639960 Fax: +86.21.65631380 URL: www.linreix.com

### S 5 Series Push-pull Coaxial Connector

S5 series push-pull connector is similar with Lemo coaxial connectors. It is characterized with fine workmanship, stylish looking, easy operation and reliable connection.

S1 series is suitable for applications in need of space-saving and frequent operation. It is widely used in the fields like measurement, test and communication.

### Technical Characteristics

#### Climatic

Temperature:  $-55^{\circ}\text{C} \sim +150^{\circ}\text{C}$   
Relative humidity: at  $40 \pm 2^{\circ}\text{C}$ ,  $90 \pm 3\%$

#### Mechanical

Endurance:  $>3,000$  cycles

#### Electrical

Characteristic impedance:  $50 \Omega$   
Working frequency:  $0 \sim 1\text{GHz}$   
VSWR:  $\leq 1.3$   
Operating voltage(50Hz):  $500\text{VAC}$   
Test voltage(50Hz):  $1500\text{VAC}$   
Rated current:  $2 \sim 4\text{A}$   
Contact resistance:  $\leq 10\text{m} \Omega$





## Shanghai Linreix Electronics Ltd.

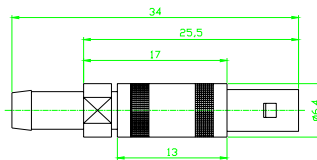
No. 2-601, Lane 369, Feihong Road, Shanghai 200086, China  
Tel: +86.21.65639960 Fax: +86.21.65631380 URL: www.linreix.com

### Materials

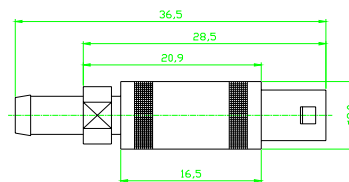
Part	Material Description	Remark
Insulator	PTFE	
Receptacle shell	Brass	Nickel plated
Plug outer shell	Brass	Nickel plated
Latch sleeve	Bronze	Nickel plated
Cable lead-through	Brass	Nickel plated
Cable collet	Brass	Nickel plated
Pin contact	Brass	Gold plated
Socket contact	Bronze	Gold plated
Earth washer	Brass	Nickel plated
Nut	Brass	Anodized or nickel plated
Strain relief	PVC	Rigid

### Dimensions

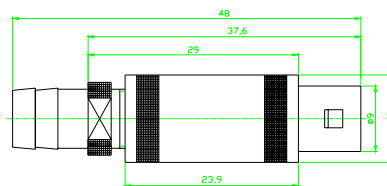
#### 1. Straight plug



Size M7



Size M8



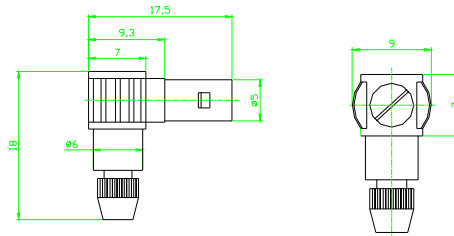
Size M12



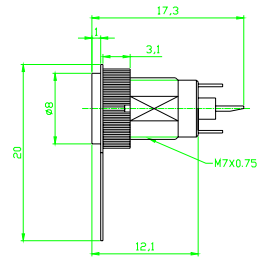
# Shanghai Linreix Electronics Ltd.

No. 2-601, Lane 369, Feihong Road, Shanghai 200086, China  
Tel: +86.21.65639960 Fax: +86.21.65631380 URL: www.linreix.com

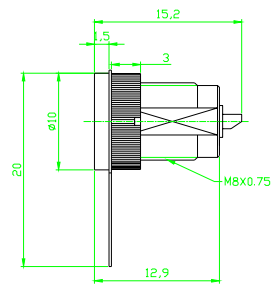
## 2. Right angle plug



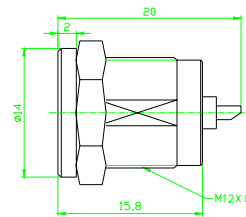
## 3. Straight receptacle of full-range thread



Size M7



Size M8



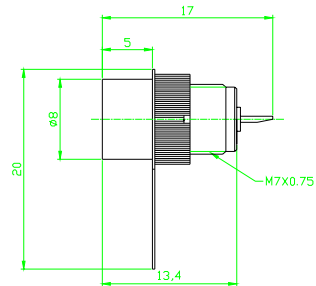
Size M12



# Shanghai Linreix Electronics Ltd.

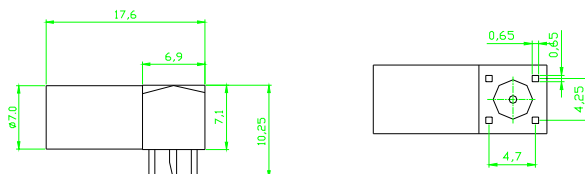
No. 2-601, Lane 369, Feihong Road, Shanghai 200086, China  
Tel: +86.21.65639960 Fax: +86.21.65631380 URL: www.linreix.com

## Straight receptacle of half-range thread



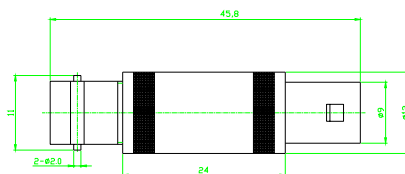
Size M7

## Elbow receptacle for printed circuit



Size M7

## Adapter



S5 to BNC, Size M12

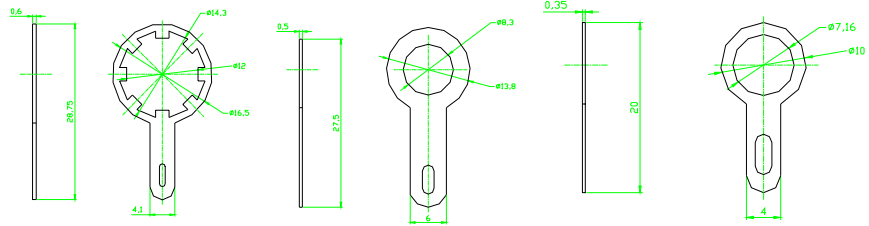


# Shanghai Linreix Electronics Ltd.

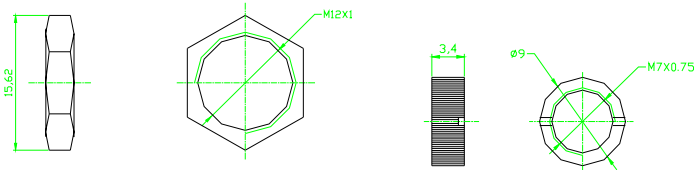
No. 2-601, Lane 369, Feihong Road, Shanghai 200086, China  
Tel: +86.21.65639960 Fax: +86.21.65631380 URL: www.linreix.com

## Accessories

### 1. Earth washers



### 2. Nuts



### 3. Strain reliefs

